

КУПА "ВЕЛИКДЕН"

VELIKDEN CUP

14-17 APRIL

VELIKDEN



CUP2023

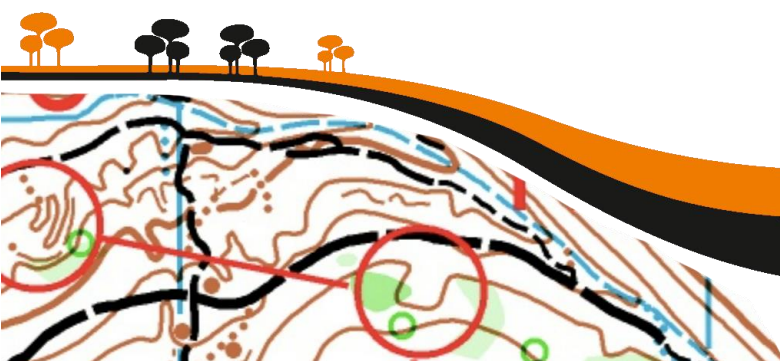
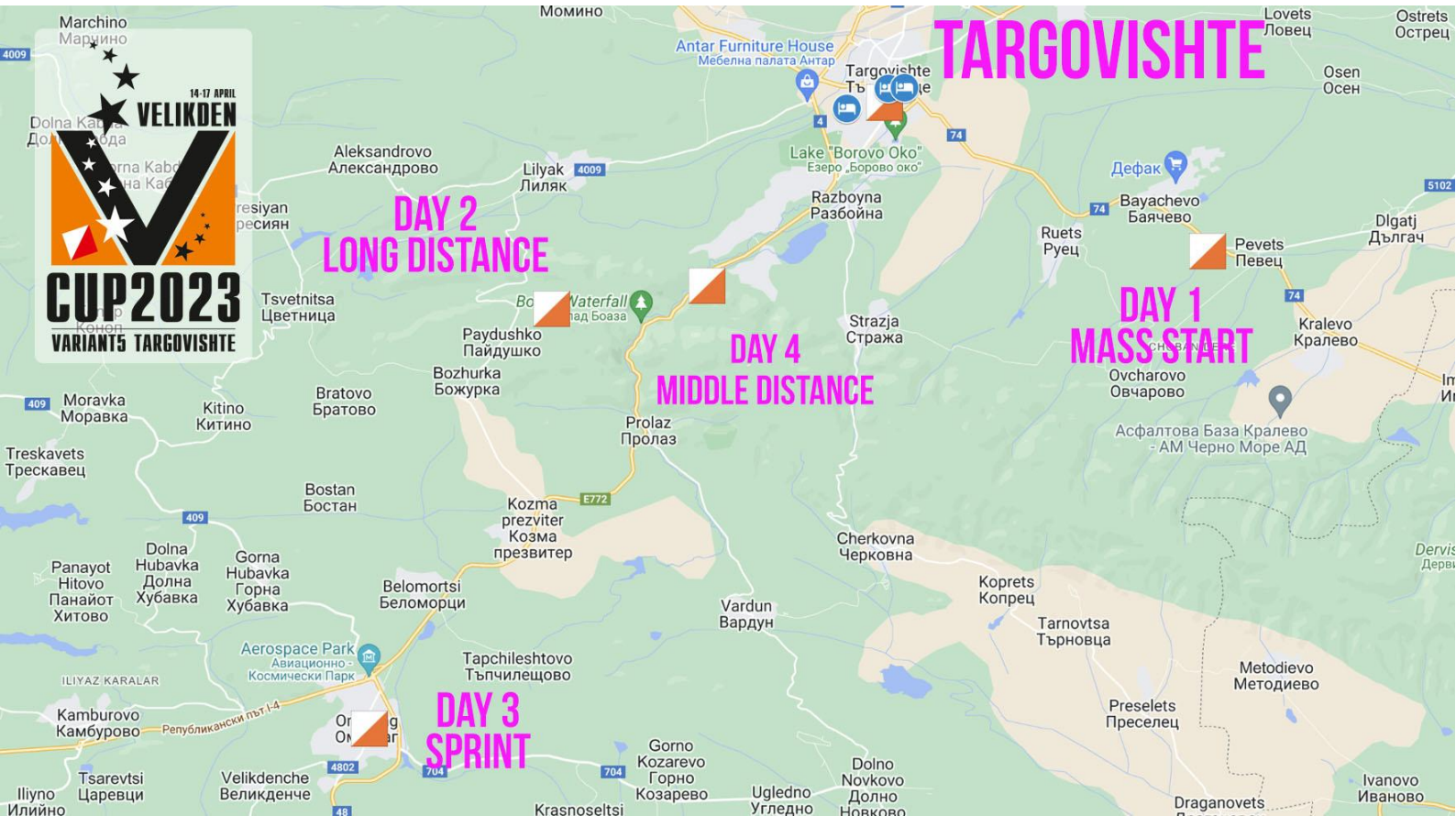
VARIANT5 TARGOVISHTE

ТРОФЕЙ "ТЪРГОВИЩЕ"

TARGOVISHTE TROPHY

# BULLETIN

printer friendly version



14.04-17.04  
2023 VELIKDEN  
WELCOME TO  
CUP

variant5 targovishte

Thursday, 13 of April 2023

Registration

City of Targovishte

16.00 - 19.00: Registration in the club house of Variant 5, str. 30<sup>th</sup> of January 3A, Targovishte

GPS: [43°14'38.8"N 26°34'19.1"E \(KAPTA\)](#)

Friday, 14 of April 2023

**Mass start Middle distance**

(«Balkan Party»)

Bayachevo village

**12.00:** Event center is open at the arena;  
Registration for Open classes possible.  
**15.00:** First start of «**Mass start Middle**».  
**17.00:** Prize-giving at the finish arena.

GPS: [43.212686, 26.667414](#)

#### Map and terrain

Map: Bayachevo (12.2022). Scale 1:7500, contours 5 meters. Terrain: From flat to semi hilly with rounded terrain forms, valleys, ditches, fox holes and reentrants. Good track and path network with different categories. The area lacks water features. 80% deciduous forest and 20% open areas generally with good visibility and runnability. Because of regular cuttings some areas are covered with undergrowth which slows you down and is drawn with green lines on the map.

#### Map sample



#### START procedure

Distance from finish to start is 50 meters. Mass start Middle distance – there is no start SI station. PLEASE be in the start area about 10 minutes before so that you can go up to the line, receive your map, clear check your SI and so on. ALL runners have to start with bib numbers on their chest.

#### Starting order «Mass start Middle»

15.00: W12 A	15.40: M35, W35, OL (map change)
15.04: W12 B	15.44: M45, M50 (map change)
15.08: M12 A	15.48: W40, W21B (map change)
15.12: M12 B	15.52: M40, M21B (map change)
15.16: W14, OS	15.56: W45, W50 (map change)
15.20: M14 (map change)	16.00: M55, M60 (map change)
15.24: M16 (map change)	16.04: W55 (map change), W60, W65
15.28: W16, OM (map change)	16.08: M65, M70, M75 (map change)
15.32: M18, M20 (map change)	16.12: W21E (map change)
15.36: W18, W20 (map change)	16.16: M21E (map change)

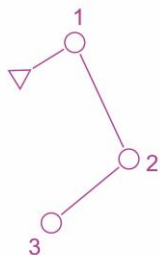
#### Courses

All courses have forkings. Please follow carefully the order of your course on the map!

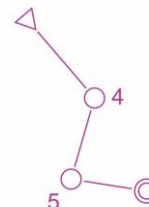
There is **NO** map change for the classes: M/W 12 B, M/W 12 A, W 14, W60, W65 and Open Short, **all other have map change** – when the runners reach their last control on MAP 1 they have to turn it around – on MAP 2 the course starts with a triangle on the same spot where the last control of MAP 1 was. The order of the controls continues from map 1. **See example below.**

Course setter: Ivan Sirakov





**1**



**2**



**M10 и W10**

There will be a separate course for the kids M/W 10 – from 15:30 to 16:00 o'clock. No classification, just small surprises for all kids.

**FINISH procedure**

Classification is based on the finishing order. There are two SI stations at the finish line, where every competitor should finish their race (touch-free mode). SI read out is right after. All dnf-athletes must go through the SI read-out procedure.

Maximum race time is 90 minutes.

**!!! Touch-free SI cards are sold at the arena!!!**

**Fair play. Maps won't be collected at the finish line. Please don't show it to runners who haven't started their race yet.**

**Classification and prizes**

Top 3 in each category will be awarded with prizes from Mebel Stil and branded mugs "Velikden Cup" for the winners.



**Saturday, 15 of April 2023**

**Long distance – Targovishte Trophy («Balkan Heroes»)**

**Paydushko village**

**09.00:** Event center is open at the finish arena

**11.00:** Start of the **LONG distance**.

**15.30:** Prize-giving at the finish.

GPS: [43.196225, 26.469122](https://www.gpsies.com/43.196225,26.469122)

**Map and terrain**

Map: Paydushko (01.2023). Scale 1:10000, contours 5 meters. Terrain: From semi to very hilly with rounded terrain forms. A lot of depressions, ditches, stones and undergrowth. Well-developed path and track network with different categories. 40% deciduous forest, 40% pine forest (bad runnability at places) and 20% open areas with very good visibility. No water objects.

**Refreshment points**

For classes M21E и W21E there will be one refreshment point at 70% of the course. It will be marked on the map. It is possible to get your own drink at the refreshment point but you have to deliver it at event center at the finish no later than 11 o'clock.

**START procedure**

From finish to start it is 250 meters. Competitors have to be at the start 3 minutes in advance of their start time. Runners use SI Start station.

### FINISH procedure

Marked route from last control to finish. There are 2 SI stations at the finish line where everybody has to punch to stop their race time. SI read out is right after. All dnf-athletes must go through the SI read-out procedure.

**Fair play. Maps won't be collected at the finish line. Please don't show it to runners who haven't started their race yet.**

### Map sample



Maximum race time is 180 minutes.

### Classification and prizes

Top 3 in each category will be awarded with Velikden Cup branded orienteering mesh tops from **Bryzos**. (without MW10 and open courses).



### M10 и W10

Starting from the same start from 12:00 o'clock up to 13:00. No classification but small surprises for everybody.

**SUNDAY, 16 of April 2023**

**SPRINT**

**(«Balkan Express»)**

**Omurtag city**

**11:00:** Event center open at finish arena

**12:50:** Quarantine closing

**13.00:** First start of the **Sprint**

**15.30:** Prize-giving at the finish arena.

GPS: [43.107283, 26.418739](https://www.google.com/maps/place/43.107283,26.418739)

### Quarantine & Fair play

There will be a quarantine-zone in the school yard of "Simeon Velchev" school", 350 meters from the finish arena – it will be marked. Quarantine closes at 12:50 and no competitors will be allowed to enter after that time.

Please, follow the fair-play rules and don't give any information to any competitors who haven't started their races yet.

**The race is part of the Bulgarian Park Cup.**

### Map and terrain

Map: Omurtag – center (02.2023). Scale 1:4000, contours 2.5 meters. Terrain: typical city terrain – with lots of streets and little traffic but still be careful when crossing streets! There will be guards at few places. It is compulsory to race with bib numbers on the chest. We remind you that all impassable objects on the map are forbidden to cross. There might be artificially closed streets. There will be a lot of referees on the course so braking the rules will lead to disqualification.

### START procedure

Start is located in the school Simeon Velchev. Competitors has to be at the quarantine-exit 5 minutes in advance and follow the tapes to the start. All runners start with SI start station.

### FINISH procedure

Marked route from last control to finish. There are 2 SI stations at the finish line where everybody has to punch to stop their race time. SI read out is right after. All dnf-athletes must go through the SI read-out procedure.

**Fair play. Maps won't be collected at the finish line. Please don't show it to runners who haven't started their race yet.**

## Map sample



Maximum running time is 60 minutes.

### M10 & W10

There will be a separate course for the kids M/W 10 – from 14:00 to 14:30 o'clock. No classification, just small surprises for all kids. The start is the same as for the rest of the classes.

### Classification and prizes

Top 3 in each category will be awarded with medals.

**Monday, 17 of April 2023**

**Middle distance**

**«Balkan Hills»**

**Parka – Misionis**

**09.00:** Event center is open at the finish arena

**10:30:** Start of the **Middle distance**

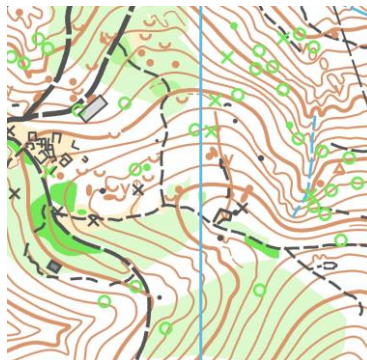
**13.30:** Prize giving and closing at the finish arena

GPS: [43.204883](#), [26.517250](#)

### Map and terrain

Map: Parka-Misionis (03.2023). Scale 1:7500, contours 5 meters. Terrain: From semi to very hilly north slope. Lots of fox holes, ditches, reentrants and single trees. Well-developed path and track network with different categories. 90% deciduous forest & 10% pine forest with very good visibility and runnability. No water objects.

## Map sample



### START procedure

The distance from finish to start is 750 meters – marked route. Competitors has to be at the start 3 minutes in advance of their start time. All runners use SI Start station at the start.

### FINISH procedure

Marked route from last control to finish. There are 2 SI stations at the finish line where everybody has to punch to stop their race time. SI read out is right after. All dnf-athletes must go through the SI read-out procedure.

**Fair play. Maps won't be collected at the finish line. Please don't show it to runners who haven't started their race yet.**

Maximum race time is 120 minutes..

### Classification and prizes

Top 3 in each category will be awarded with medals. For some categories there will be special prizes from **GoldNutrition**.



## M10 и W10

Kids up to 10 years old run a marked course – start from 11:30 to 12:00 from Start 2 – nearby the finish. No classification, just small surprises for all kids

## ADDITIONAL INFORMATION

### SPORTident

SI stations will be in touch-free mode for all distances.  
!! New touch-free SIACs will be sold at the finish arena.

There is a possibility for contact SI-card rent with a 1 BGN fee per day/competitor. Lost SI – 50 or 85 BGN (depends on the model).  
There is a possibility for battery change of SIACs. Ask at the info-desk or email us: [teamcontact@variant5.org](mailto:teamcontact@variant5.org) .

### GPS tracking

There will be GPS tracking in real time, thanks to <http://tracksport.eu>. We ask all competitors chosen to wear a GPS device to cooperate and come at the arena to pick it up early enough. List with GPS runners will be uploaded before the races.

### Parking

Please follow the instructions of our staff and police to park your vehicles.

### Toilets

Please if needed use the toilets provided in the arena of 1st, 2nd and 4<sup>th</sup> day. In city of Omurtag there will be toilets in the Municipality and the coffees near the finish and also at the school in the Quarantine.

### O-shops

There won't be any scotch at the start. In the finish area there will be some o-shops where you can buy some fancy and quality stuff.

### Food and drinks

Every day at the finish there will be a bar where you can buy food and drinks.

### Sponsors

We are glad to present you our sponsors and partners. Thanks to their effort we have to possibility to hold and confirm the quality of our international orienteering competitions for Velikden Cup 2023!

### SPONSORS & PARTNERS

*Förderverein «VARIANT 5» (Switzerland)*

*Municipality of Targovishte*

*Minucipality of Omurtag*

*AGRICO - Sofia*

*BONERO*

*HOWAG Bulgaria (Targovishte)*

*«Bryzos» [www.bryzosport.com](http://www.bryzosport.com) – sports equipment company.*

*Mebel stil – <https://www.mebelstil.eu/>*

### Special support

In 2023 all Bulgarian clubs can count on substantial support for their youngsters, All competitors in classes MW10-12-14-16, entered in time, will race for free – their starting fee will be covered by the *Förderverein «VARIANT 5» (Switzerland)*.

### ORGANIZING comittee

Technical director: Диан Бонев

Event director: Marin Neykov

Map maker: Dian Bonev

Courses: Dian Bonev (sprint, middle & long) and Ivan Sirakov (Mass start)

Secretary: Petranka Angelova

Medical support: Doc. Hristo Hristov

Accommodation: Dimka Chakarova

Internet: Ivan Sirakov

Timekeeping: Milen Marinov

Start: Keazim Kozarev, Slav Iliev, Kolio Todorov & Maya Boneva

Finish: Stefan Vamporovo, Nikolay Vidov

Course referees: Petar Todorov, Iliyan Pavlov, Slav Vamporov and Atanas Valev

... and a lot more supporters!



## Technical data about the courses



CLASS	МАСОВ СТАРТ / MASS START MIDDLE			ДЪЛГА / LONG DISTANCE			СПРИНТ / SPRINT DISTANCE			СРЕДНА / MIDDLE DISTANCE			ГРУПА
	Карта "Баячево" 1:7500 / 5m (12.2022)			Карта "Пайдушко" 1:10000 / 5m (01.2023)			Карта "Омуртаг Център" 1:4000 / 2m (02.2023)			Карта "Парка-Мисионис" 1:7500 / 5m (03.2023)			
	Map "Bayachevo" 1:7500 / 5m (12.2022)			Map "Paydushko" 1:10000 / 5m (01.2023)			Map "Omurtag Center" 1:4000 / 2m (02.2023)			Map "Parka-Misionis" 1:7500 / 5m (03.2023)			
	14 April 2023			15 April 2023			16 April 2023			17 April 2023			
	Маршрути: Иван Сираков			Маршрути: Диан Бонев			Маршрути: Диан Бонев			Маршрути: Диан Бонев			
	дължина length	сборно climb	КТ controls	дължина length	сборно climb	КТ controls	дължина/права length/straight	сборно climb	КТ controls	дължина length	сборно climb	КТ controls	
M10				1,0	10	4	0,7	10	6	0,6	30	3	M10
M12A	2,2	55	10	2,8	35	11	1,8	20	12	2,3	125	10	M12A
M12B	2,0	50	10	2,2	30	8	1,3	15	9	1,8	115	12	M12B
M14	3,5	80	19	3,2	50	13	2,2	25	13	2,6	135	14	M14
M16	5,6	150	25	6,8	170	18	3,3	45	18	3,8	155	18	M16
M18	6,5	160	27	8,1	175	24	3,9	55	22	3,9	185	22	M18
M20	6,9	165	29	8,4	180	24	3,9	55	22	4,0	185	22	M20
M21B	4,9	130	21	6,8	170	18	3,3	45	18	3,8	155	18	M21B
M21E	6,9	165	29	10,5	265	31	3,9	55	22	4,6	225	24	M21E
M35	6,5	160	27	8,4	180	24	3,4	50	19	4,0	185	22	M35
M40	5,6	150	25	8,1	175	24	3,4	50	19	3,9	185	22	M40
M45	5,6	150	25	6,6	165	15	3,0	45	15	3,5	180	22	M45
M50	4,9	130	21	6,8	170	18	3,0	45	15	3,8	155	18	M50
M55	4,9	130	21	5,2	165	18	2,5	30	17	3,1	145	18	M55
M60	4,4	100	19	4,2	75	14	2,5	30	17	3,0	140	20	M60
M65	4,4	100	19	4,2	75	14	2,4	25	16	3,0	140	20	M65
M70	3,5	80	19	3,1	65	11	2,4	25	16	2,4	125	15	M70
M75	3,5	80	19	3,1	65	11	2,4	25	16	2,4	125	15	M75
W10				1,0	10	4	0,7	10	6	0,6	30	3	Ж10
W12A	2,0	50	10	2,5	35	9	1,5	20	11	2,0	125	10	Ж12A
W12B	2,0	50	10	2,2	30	8	1,3	15	9	1,8	115	12	Ж12B
W14	2,2	55	10	2,8	35	11	1,8	20	12	2,3	125	10	Ж14
W16	4,4	110	19	5,2	165	18	2,8	35	16	3,1	145	18	Ж16
W18	4,9	130	21	6,6	165	15	3,4	45	19	3,5	180	22	Ж18
W20	5,6	150	25	6,6	165	15	3,4	45	19	3,5	180	22	Ж20
W21B	4,4	110	19	5,3	115	16	2,8	35	16	3,7	145	22	Ж21B
W21E	6,5	160	27	8,4	180	24	3,4	45	19	4,0	185	22	Ж21E
W35	4,9	130	21	5,3	115	16	2,9	40	16	3,7	145	22	Ж35
W40	4,4	110	19	5,3	115	16	2,9	40	16	3,7	145	22	Ж40
W45	4,4	110	19	5,2	165	18	2,7	35	16	3,1	145	18	Ж45
W50	3,5	80	19	4,2	75	14	2,7	35	16	3,0	140	20	Ж50
W55	3,5	80	19	4,2	75	14	2,4	25	16	3,0	140	20	Ж55
W60	2,2	55	10	3,1	65	11	2,4	25	16	2,4	125	15	Ж60
W65	2,2	55	10	3,1	65	11	2,4	25	16	2,4	125	12	Ж65
Open short	2,0	50	10	2,5	35	9	1,5	20	11	2,0	125	10	Опен Къс
Open middle	4,9	130	21	3,2	50	13	2,2	25	13	2,6	135	14	Опен Среден
Open long	6,5	160	27	8,1	175	24	3,3	45	18	3,9	185	22	Опен Дълъг



BONERO



MEBEL STIL



WELCOME and come back in 2024!

